

Product Catalogue
2011/2012

CAST PRECAST
PH 5442 2522

ALLCAST PRECAST
PH 5442 2522

ALLCAST PRECAST
PH 5442 2522

ALLCAST PRECAST
PH 5442 2522





WELCOME TO ALLCAST PRECAST.

Allcast Precast is a progressive company with a mission of becoming the premier concrete water and septic tank manufacturer in Queensland.

Allcast Precast was first started in 1960 under the name of Monocast. Tanks in those days were formed with mesh and hand rendered, an extremely labour intensive process taking days to complete. Fifty years on our tanks are manufactured under strict conditions using 40 MPA ready mixed concrete and graduated steel tank mesh. All of our tanks are made in steel moulds and the concrete is poured in under constant vibration, resulting in a dense smooth finish.

Our factory is based close to the Bruce Highway on the Sunshine Coast giving our crane trucks quick access to South East Queensland both to the north and south.

Whatever your requirement please call one of our friendly sales team who will happily assist you.

4 REASONS WHY CONCRETE IS **BETTER THAN POLY OR TIN**

We will locate custom fittings to your specification

1.

Large capacity units can be installed under a driveway or garage slab, leaving space free for other uses.

2.

Water is kept cool preventing bacteria and algae growth.

3.

There are no added chemicals in manufacture, therefore no unpleasant taste.

4.

They will not burn in a fire as other tanks do destroying your fire-fighting capacity.

IN GROUND CONCRETE TANKS

04

Our in ground concrete tank range can be positioned flush with ground level, above ground or in a retaining situation

Please speak to our staff for installation guidelines.



IN GROUND CONCRETE TANKS

Product Code	Diameter (m)	Height (m)	Lid Load Limit (kg)
STD3700	1.93	1.7	500
STD5200	1.93	2.275	500
HD5200	2.5	1.475	500
STD6200	2.5	1.725	500
STD8600	2.5	2.225	500
HD10200	3.5	1.49	500
HD14000	3.5	1.875	500
HD18000	3.5	2.275	500
STD23000	3.5	2.8	500
HD23000	3.5	2.8	500
STD32000	3.5	4.0	500

ASSOCIATED PRODUCTS

Product Code	Description
ALMC	Aluminium lockable manhole covers
LS500	500ml black poly round leaf strainer (Queensland registered and mosquito proof)
OF100	100ml overflow screens
AFB-01	Anti-floatation bars for concrete ballast
JSW Onga	Stainless Steel jet pump
DW Onga	Stainless Steel submersible pump
WS Onga	WaterSwitch automatic controller
OSJP	Orange Stainless Steel jet pump
PC	Pump covers
CP 450	450x450 reinforced concrete pavers
CP 600	600x600 reinforced concrete pavers



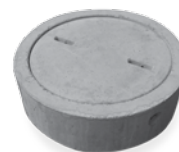
Onga JSW pump & WaterSwitch



Black round leaf strainer



Aluminium cover



Riser & concrete M/H cover



Riser & recessed gattic cover

CONCRETE UNDERGROUND TANKS

Heavy Duty trafficable lids 2.0 tonne point load capacity.

SMALL TANKS

Our small tanks are designed to exceed minimum holding capacity requirements for residential buildings. Tanks can be placed below gardens, grassed areas, driveways or garage slabs. Speak to our staff for advice on selection on lids, risers and covers suitable for your specific application.

Product Code	Product Code	Diameter (m)	Height (m)	Point Load Capacity (t)
STD3700 (squat tank)	TL1930	1.93	1.775 + riser	2.0
STD5200	TL1930	1.93	2.35 + riser	2.0
HD5200 (squat tank)	TL2500	2.5	1.55 + riser	2.0
STD6200 (squat tank)	TL2500	2.5	1.8 + riser	2.0
STD8600	TL2500	2.5	2.3 + riser	2.0

TL = Trafficable Lid

LARGE TANKS

Due to today's climate and water restrictions, many people are opting for large capacity underground storage tanks. These units are out of sight, out of mind and allow you to wash cars, boats, water lawns and gardens without restriction.

Allcast Precast tanks are designed for residential, rural and serious commercial situations. Fittings, tank heights and lids can be customised to your requirements.

Product Code	Product Code	Diameter (m)	Height (m)	Point Load Capacity (t)
HD10200	TL3500	3.5	1.56 + riser	2.0
HD14000	TL3500	3.5	1.95 + riser	2.0
HD18000	TL3500	3.5	2.35 + riser	2.0
STD23000	TL3500	3.5	2.875 + riser	2.0
HD23000	TL3500	3.5	2.875 + riser	2.0
STD32000	TL3500	3.5	4.075 + riser	2.0

TL = Trafficable Lid

ASSOCIATED PRODUCTS

Product Code	Diameter (mm)	Height (mm)	Cover
R100C	600	100mm high concrete manhole riser	Concrete cover
R150C	600	150mm high concrete manhole riser	Concrete cover
R200C	600	200mm high concrete manhole riser	Concrete cover
R150G R200G	600	150/200mm high concrete manhole riser	Class B cast iron cover – separate
R100GR R150GR	600	100/150mm high concrete manhole riser	Class B cast iron cover – recessed

We also stock a completed range of cast iron covers and galvanized grates



A typical installation of a 10,200L squat tank below a turfed area. These tanks are ideal for high water table or rocky areas with difficult excavation.

CONCRETE SEPTIC TANKS & PRODUCTS

06

Allcast Precast septic tanks comply with AS/NZS. 1546.1 and are tested by SAI Global. Straight septic tanks come standard with inlet baffle and outlet baffle. Lids have both inspection openings and access covers.

Please refer to local council guidelines for your septic needs.



CONCRETE SEPTIC TANKS

Product Code	Diameter (m)	Total Height (m)	Height to Inlet IL (m)	Height to Outlet IL (m)
ST3050	1.93	1.7	1.315	1.265
ST4000	1.93	1.7	1.675	1.625
STP4000	1.93	1.7	1.675	1.625
ST4250	1.93	2.275	1.775	1.725
ST4450	1.93	2.275	1.88	1.83
ST7000	2.5	2.225	1.68	1.63
STP7000	2.5	2.225	1.68	1.63

STP = Septic Tanks with 1/3 Partition

COLLECTION WELLS

Product Code	Diameter (m)	Total Height (m)	Height to Inlet IL (m)	Height to Outlet IL (m)
CW4650	1.93	2.275	1.88	N/A
CW7200	2.5	2.225	1.68	N/A

Collection Wells can be customised for required suction points.

SEPTIC ACCESSORIES

Product Code	Description
GT140	140L Grease trap (845 x 600 x 765mm Deep)
DB4	4 Way Distribution box
PW450	450L Pump well
PW600	600L Pump well
LOF	Large Outlet Filter (fitted)
SOF	Small Outlet Filter (fitted)



Grease Trap



D Box



WASTE WATER TREATMENT SYSTEMS

Allcast Precast manufactures a number of different treatment systems for wastewater companies. All systems are made with a 7000L concrete shell (two tank system not necessary). Systems are available from secondary treatment level right through to Advanced secondary with nutrient reduction. All systems are certified to QLD requirements.

By installing an under ground waste water treatment system you are automatically helping the environment. With the constant population growth and demand on water increasing each year a treatment system allows the household to recycle waste water for irrigation purposes. Waste water from your bathroom, laundry and kitchen is treated through a series of processes within the tank and clean treated water is pumped out onto your designated irrigated area.

Each system is transported to site and craned into position using specialised lifting equipment where a professional installer will plumb the tank up to the house drain line and power supply ready for use. You will need to enter into a maintenance service contract with your installer to ensure continued optimum operation of your system. All systems are tested and accredited by the Department Natural Resources in Queensland.

We can arrange for installers to provide a complete turn-key package. Please advise our staff of the area for install and we can arrange a **FREE ONSITE ASSESSMENT**.





www.allcastprecast.com.au



CONTACT ALLCAST PRECAST

ADDRESS :: 40 Hill Street Woombye QLD 4559
PHONE :: 07 5442 2522
FAX :: 07 5442 2479
EMAIL :: admin@allcastprecast.com.au
ABN :: 99 124 601 289