

# Activities Around Dural and Thornleigh

## Dural

### Golf Driving Range & Putt Putt Course (Dural)

OPEN 7 DAYS 8am - 9.30pm

[www.duralgolfrange.com](http://www.duralgolfrange.com)

260-266 New Line Road

Dural NSW 2158

Ph (02) 9651 1999

**\$25 Special Deal**

1 bucket of balls

Pie & a Drink



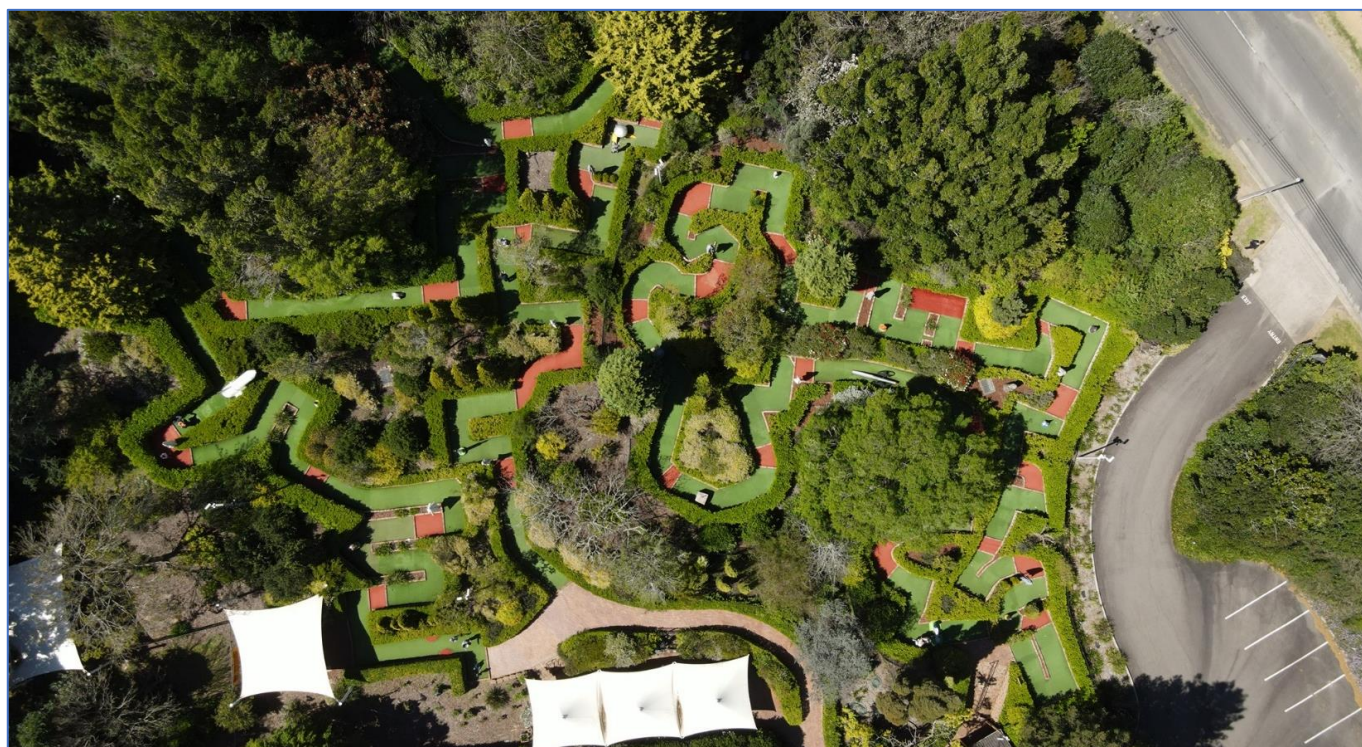
## Dural Putt Putt in the Gardens (Dural)

[www.duralputtputt.com.au](http://www.duralputtputt.com.au)

Corner of Cranstons & Old Northern Roads (Entrance via Cranstons Road) Middle Dural

(02) 9651 1334

[info@duralputtputt.com.au](mailto:info@duralputtputt.com.au)





## Roughley House 'The Pines' and Visitor Interpretation Centre (Dural)

656 A Old Northern Rd, Dural

1km/2min from Dural & 12km/21min from Thornleigh

[visitorinfo@thehills.nsw.gov.au](mailto:visitorinfo@thehills.nsw.gov.au)

02 9651 4411

The site provides both visitor services and historical interpretation of the Great North Road and Roughley House. The Centre is a must see attraction in its own right.



## Galston

### Sugar Salt Café (Galston)

344 Galston Rd, Galston

6km/7min from Dural & 15km/25min from Thornleigh

(02) 9653 2808





## The Galston Club

21-25 Arcadia Rd, Galston

6km/7min from Dural & 16km/25min from Thornleigh

[www.galstonclub.com.au](http://www.galstonclub.com.au)



## The Village Secret Garden (Galston)

[www.thevintagesecretgarden.com.au](http://www.thevintagesecretgarden.com.au)

353 Galston Rd, Galston

6km/7min from Dural & 15km/25min from Thornleigh



## Fagan Park (Galston)

[Fagan Park Information](#)

38-48 Arcadia Road, Galston

7km/8min from Dural & 16km/25min from Thornleigh





## Galston Gorge

10km/15min from Dural & 11km/18min from Thornleigh

[Galston Gorge Information](#)

[Galston Gorge to Hornsby Walking Track \(9.7km one way\)](#)



## The Riverboat Postman (Brooklyn)

41km/38min from Dural & 30km/23 min from Thornleigh

<https://riverboatpostman.com.au>

Come cruising with us on the Hawkesbury Mail Boat, the famous Riverboat Postman, and enjoy the magnificent scenery of the lower Hawkesbury River as we deliver the mail and other essentials (the odd bottle of whiskey or rum...) to the river-access-only settlements upriver from Brooklyn. We leave the wharf at 10am each weekday except public holidays, regardless of the weather- after all, 'the mail must get through'!





## Berowra Waters Marina Restaurants and Cafes

18km/21min from Dural & 21km/36min from Thornleigh

[www.berowrawatersmarina.com.au/restaurants-cafes](http://www.berowrawatersmarina.com.au/restaurants-cafes)

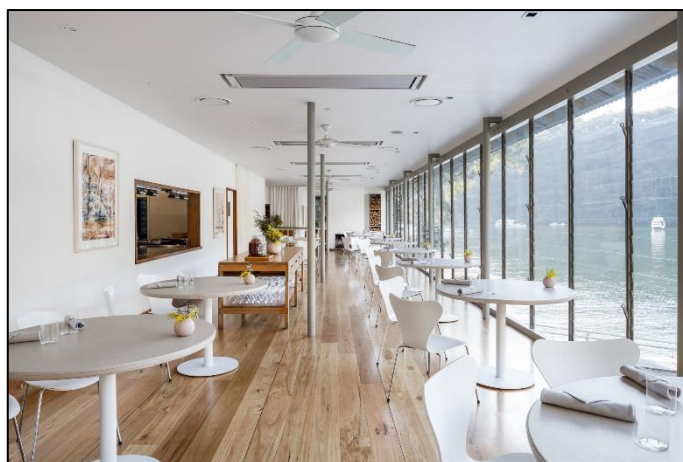
[info@berowrawatersmarina.com.au](mailto:info@berowrawatersmarina.com.au)



## Berowra Waters Inn (Fine Dining)

[www.berowrawatersinn.com](http://www.berowrawatersinn.com)

Located on Berowra Creek, a tributary of the Hawkesbury River, Berowra Waters Inn takes absolute water Frontage to a new level



## Wisemans Ferry

Wisemans Inn Hotel

6 Old Northern Rd, Wisemans Ferry

42km/37min from Dural & 52km/60min from Thornleigh

(02) 4566 4780



## Glenhaven

### Entrata Restaurant (Fine Italian Dining)

[www.entratarestaurant.com.au](http://www.entratarestaurant.com.au)

143 Glenhaven Rd, Glenhaven

7km/10 min from Dural and 14km/27min from Thornleigh

(02) 9899 5608

